

VÄXJÖ/Kronoberg

RNP RWY 19

EGNOS Ch 50847 E 19A

**INSTRUMENT
APPROACH
CHART – ICAO**

THR ELEV 563.2 ft, AD ELEV 610 ft

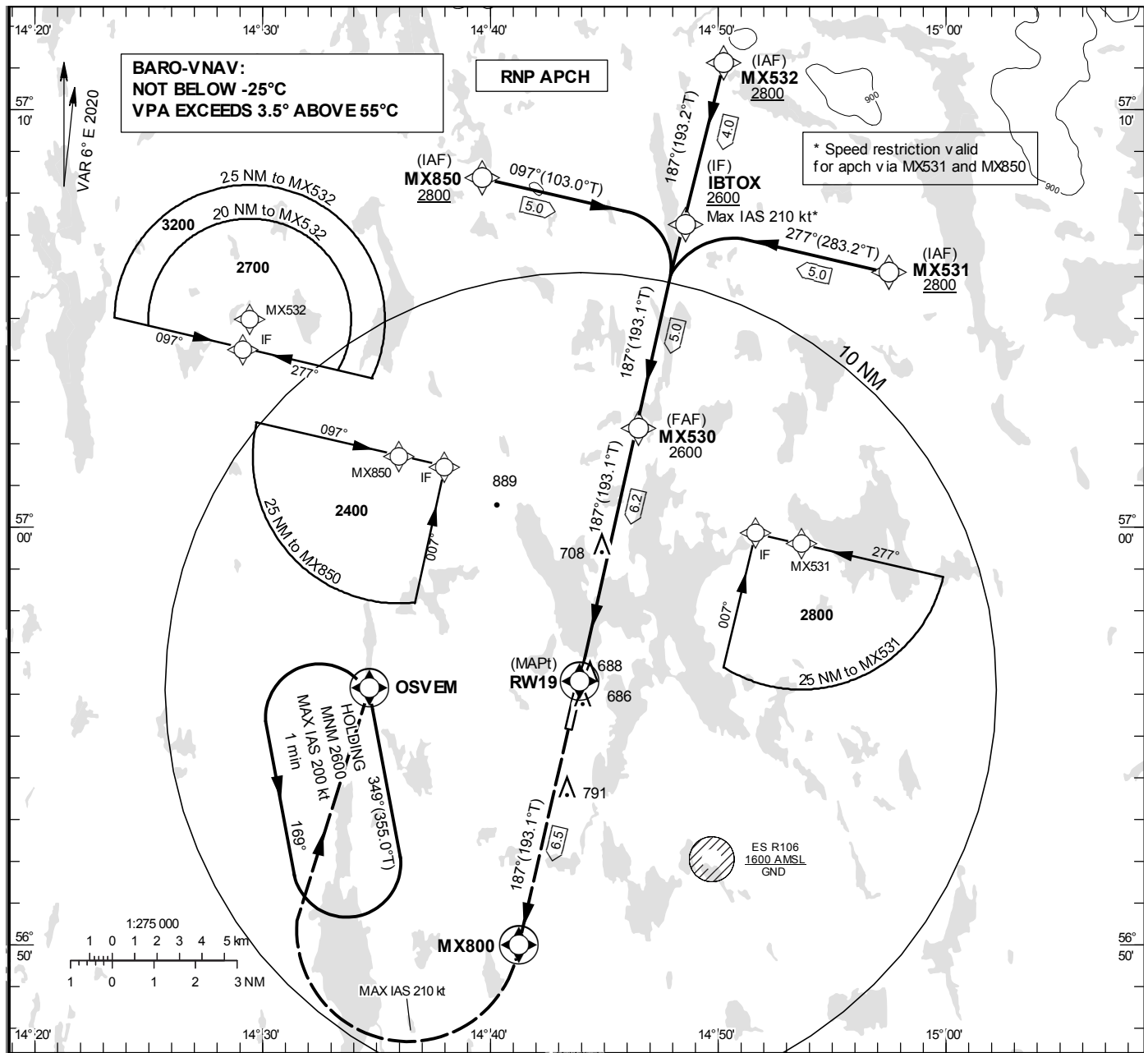
OCH are related to THR.

BRG are MAG (True).

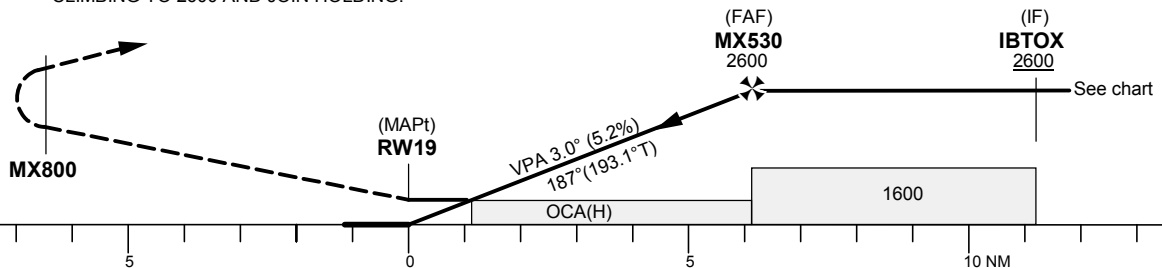
ALT, HGT and ELEV in ft.

KRONOBERG TOWER

118.155



CLIMB TO MX800,
TURN RIGHT (MAX IAS 210 kt) TO OSVEM,
CLIMBING TO 2600 AND JOIN HOLDING.



OCA (H)					Final approach	Distance FAF-MAPt 6.2 NM				
Cat of ACFT	A	B	C	D	Dist to RW19 (NM)	2	3	4	5	6
LPV	817 (254)	829 (266)	837 (274)	847 (284)	ALT	1250	1570	1890	2210	2520
LNAV/VNAV	819 (256)	831 (268)	839 (276)	849 (286)	GS	kt	80	100	120	140
LNAV	960 (400)				Rate of descent	ft/min	425	530	635	745
Circling	1090 (480)	1110 (500)	1240 (630)	1290 (680)					850	955

CHANGE: Editorial

VÄXJÖ/Kronoberg

RNP RWY 19 via MX531

Path Desc	Waypoint Identifier	Fly-over	Course °M(°T)	Dist (NM)	Turn Dir	Altitude	Speed	VPA/ RDH	Rec Navaid	Navigation Specification
IF	MX531	-	-	-	-	+2800	-	-	-	RNP APCH
TF	IBTOX	-	277°(283.2°)	5.0	-	+2600	-210	-	-	RNP APCH

RNP RWY 19 via MX532

Path Desc	Waypoint Identifier	Fly-over	Course °M(°T)	Dist (NM)	Turn Dir	Altitude	Speed	VPA/ RDH	Rec Navaid	Navigation Specification
IF	MX532	-	-	-	-	+2800	-	-	-	RNP APCH
TF	IBTOX	-	187°(193.2°)	4.0	-	+2600	-	-	-	RNP APCH

RNP RWY 19 via MX850

Path Desc	Waypoint Identifier	Fly-over	Course °M(°T)	Dist (NM)	Turn Dir	Altitude	Speed	VPA/ RDH	Rec Navaid	Navigation Specification
IF	MX850	-	-	-	-	+2800	-	-	-	RNP APCH
TF	IBTOX	-	097°(103.0°)	5.0	-	+2600	-210	-	-	RNP APCH

Path Desc	Waypoint Identifier	Fly-over	Course °M(°T)	Dist (NM)	Turn Dir	Altitude	Speed	VPA/ RDH	Rec Navaid	Navigation Specification
IF	IBTOX	-	-	-	-	+2600	-	-	-	RNP APCH
TF	MX530	-	187°(193.1°)	5.0	-	@2600	-	-	-	RNP APCH
TF	RW19	Y	187°(193.1°)	6.2	-	@613	-	-3.0/50	-	RNP APCH
TF	MX800	Y	187°(193.1°)	6.5	-	-	-	-	-	RNP APCH
DF	OSVEM	Y	-	-	R	+2600	-210	-	-	RNP APCH

ESMX Holding OSVEM

Path Desc	Waypoint Identifier	Fly-over	Course °M(°T)	Dist (NM)	Turn Dir	Altitude	Speed	VPA/ RDH	Rec Navaid	Navigation Specification
HM	OSVEM	Y	349°(355.0°)	-	L	+2600	-200	-	-	RNP 1

FAS Data Block

RNP RWY 19

Input data

Operation Type	0
SBAS Provider	1 (EGNOS)
Airport Identifier	ESMX
Runway	19
Runway Letter	0 (None)
Approach Performance Designator	0
Route Indicator	
Reference Path Data Selector	0
Reference Path Identifier	E19A
LTP/FTP Latitude	565618.0465N
LTP/FTP Longitude	0144354.8220E
LTP/FTP Ellipsoidal Height (metres)	204.4
FPAP Latitude	565508.9025N
Delta FPAP Latitude (seconds)	-69.1440
FPAP Longitude	0144325.4915E
Delta FPAP Longitude (seconds)	-29.3305
Threshold Crossing Height	50.0
TCH Units Selector	0 (feet)
Glidepath Angle (degrees)	3.00
Course Width (metres)	105.00
Length Offset (metres)	88
HAL (metres)	40.0
VAL (metres)	50.0

Output data

Data Block	10 18 0D 13 05 13 00 00 01 39 31 05 FD 6E 6F 18 8C 7E 52 06 FC 1B D0 E3 FD DB 1A FF F4 01 2C 01 64 0B C8 FA 61 F3 1A 5E
Calculated CRC Value	61F31A5E

Required Additional Data

ICAO Code	ES
LTP/FTP Orthometric Height (metres)	171.7